



LuxuryTM

Paints

An ISO 9001:2015
Certified Company

Advanced
DEFENDER
SERIES



Exterior/Interior
High Gloss Emulsion



Coverage

200-210 sq.ft/ltr/2 coats, under ideal test conditions.



Truly Durable



Water Repellence



Anti Fungal Protection



Dirt Pick Up Resistance



High Sheen



Shades that Never fade



Green Pro Certified



DEFENDER SERIES

MRP ₹

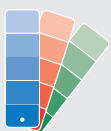
12750/-

20 Ltr.

10

T&C apply.

Colour Range



Finish

- HIGH
 - MEDIUM
 - SMOOTH
 - HIGH SHEEN ✓
- High Sheen

Toxicity



Drying Time



SD: 30 min depending on weacher conditions
HD: 4-6 hours

Dilution Ration



40% by volume
for dark shades: 0-10%

Application Method



Brush/Roller/Spray

Exterior/Interior
Gloss Emulsion

Coverage
160-170 sq.ft/lit/2 coats, under ideal test conditions.



Truly Durable



Water Repellence



Anti Fungal Protection



Dirt Pick Up Resistance



High Sheen



Shades that Never fade



Green Pro Certified



DEFENDER SERIES

MRP ₹

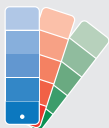
9450/-

20 Ltr.

7

T&C apply.

Colour Range



Finish

- HIGH
 - MEDIUM
 - SMOOTH
 - HIGH SHEEN ✓
- High Sheen

Toxicity



Drying Time



SD: 30 min depending on
weacher conditions
HD: 4-6 hours

Dilution Ration



40% by volume
for dark shades: 0-10%

Application Method



Brush/Roller/Spray

Exterior/Interior Gloss Emulsion

Coverage
140-150 sq.ft/ltr/2 coats, under ideal test conditions.



Truly Durable



Water Repellence



Anti Fungal Protection



Dirt Pick Up Resistance



High Sheen



Shades that Never fade



Green Pro Certified

MRP ₹

7450/-

20 Ltr.

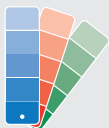


DEFENDER SERIES

5

T&C apply.

Colour Range



Finish

- HIGH
 - MEDIUM
 - SMOOTH
 - HIGH SHEEN ✓
- High Sheen

Toxicity



Drying Time



SD: 30 min depending on weacher conditions
HD: 4-6 hours

Dilution Ration



40% by volume
for dark shades: 0-10%

Application Method



Brush/Roller/Spray

Exterior/Interior
Gloss Emulsion

Coverage
140-150 sq.ft/ltr/2 coats, under ideal test conditions.



Truly Durable



Water Repellence



Anti Fungal Protection



Dirt Pick Up Resistance



Green Pro Certified

MRP ₹

4680/-

20 Ltr.



DEFENDER SERIES

Finish

HIGH

MEDIUM

SMOOTH ✓

Toxicity



Drying Time



SD: 30 min depending on
weacher conditions
HD: 4-6 hours

Dilution Ration



40% by volume
for dark shades: 0-10%

Application Method



Brush/Roller/Spray



Latex Kalash



Product Attributes



Truly durable
Offers 10 years performance warranty

Water repellence

Nano Silicon technology provides protection against extreme rain



Advanced Anti-algae & Anti-fungal protection

Prevents the growth of fungus and algae on exterior walls, ideal for heavy rainfall areas

Dirt pick up resistance

Unique polymer composition helps to remove dust and keeps home looking fresh for years



High sheen

Superior sheen finish enhances the beauty and curb appeal of the house

Shades that never fade

Shades lasts for more than 10 years, making your house look new, year after year



Green Pro Certified

Validates our effort in striving towards cleaner, more sustainable future.

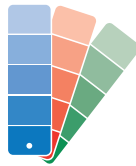
Product Description

Latex Kalash is a premium exterior emulsion paint with PU and Silicon technology. The paint is designed for heavy rainfall areas and provides excellent protection against extreme rain and growth of fungus & algae. The PU component of the paint imparts durability along with high sheen to the paint film.

Recommended Use

Exterior plastered surfaces, concrete blocks and asbestos

Colour Range



Finish

- HIGH
 - MEDIUM
 - SMOOTH
 - HIGH SHEEN ✓
- High Sheen

Toxicity



Pigment Add Coverage

60 -70 sq.ft/ lt/2 coats, under ideal test conditions.

Recommended Undercoats

Primer: For wall/plastered surfaces – Latex Primer

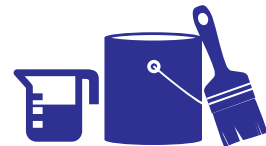
Putty: For wall/plastered surfaces – Luxury Wall Putty

Drying Time



SD: 30 min depending on weather conditions
HD: 4-6 hours

Dilution Ratio



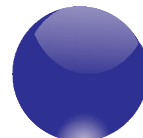
40% by volume
For dark shades: 0-10%

Application Method



Brush/ Roller/ Spray

Gloss Level



12-16 at 60° GH when released

Latex Kalash



Packs



ColorBank/ Non-ColorBank – Pack



Fire Hazard Class
Non- flammable

Unusual Fire & Explosion Hazards
Material can splatter above 212°F.
Polymer film can burn.

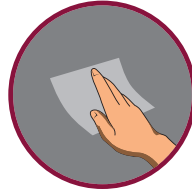


Pot Life of Thinned Material
Within 24 hrs.

Health & Safety

If the paint comes in contact with eyes or skin, flush with a large amount of water for at least 15 minutes. See a physician, if irritation persists. Wash affected skin areas with soap and water.

Surface Preparation



For fresh/new surfaces: The surface should be allowed to cure properly.



Apply 1 coat of Illusion Sealer to avoid the problem of salt petering.

For Previously Painted Surfaces:



Strip all the old paint and remove all the loose dust, grease, fungus and algae by sanding or wire brushing.



Cracks, holes, dents and damp areas should be repaired properly before painting.



Treat the surface with Bio-wash solution and wash it next day with potable water. Leave the surface to dry thoroughly.

Priming: Apply 1-2 coats of Latex Exterior Primer For best results apply Latex Primer

Directions for Application

Apply 2-3 coats of topcoat keeping an interval of 4-6 hours between each coat.

Special Note

Before painting, the following things should be checked thoroughly:

- ▶ Ideal moisture content of the wall should be below 12%
- ▶ Ideal pH value of the wall surface should be between 7-11

Points to Note

- ▶ Shake well before use and do not over dilute or over extend brush
- ▶ Stir and strain the material through a fine sieve before use
- ▶ Do not apply on high alkaline surface
- ▶ Do not apply paint on a wet surface
- ▶ Do not apply paint on chalking or flaking surface or where the surface is infected with fungus / algae
- ▶ Do not apply paint if the ambient temperature is less than or expected to fall below 10° C
- ▶ Keep out of reach of children and away from foodstuff
- ▶ In case of contact with eyes, wash immediately with water and seek medical help

For Any Query Plz Contact

LUXURY Paints & Chemicals

Office Address : Sector 17, Chandigarh (Near Post Office)

Branch Office : Industrial Area, Ankleshwar (Gujrat)

Working Address : NHI-52, Chandigarh Road, BEHBALPUR Hisar-125001 (Hry.)

Helpline No. : 98121-13582, 98127-53861, E-mail : sharmapaint82@gmail.com



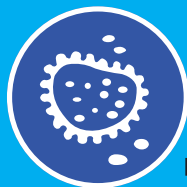
WEATHER SHIELD



Product Attributes

Better alternative to cement paints

As a water-based exterior emulsion it offers better protection and works as an upgrade from cement paints.



Anti - fungal
Provides reasonable anti - fungal protection.

Green Pro Certified

Validates our effort in striving towards cleaner, more sustainable future.



Product Description

WEATHER SHIELD is a 100% water-based exterior paint. The paint's formulation with special grade emulsion makes it ideal for use in dry and less humid climatic regions. It has higher resistance to cracking, fading and prevents the growth of fungus on the exterior walls. It is a matt finish paint with a lifespan of 3 years; a better alternative to 1 year life of cement paint.

Recommended Use

Exterior plastered surfaces, asbestos, concrete blocks, fiberboards.

Colour Range



Finish

- HIGH
- MEDIUM
- SMOOTH
- MATT ✓

Matt

Toxicity



VOC - 32.9gm/ltr

Pigment Add Coverage

50 -60 sq.ft/ lt/2 coats, under ideal test conditions. (Coverage may depend on factors like surface conditions, surface preparation, application skill, weather conditions, dilution etc.)

Recommended Undercoats

Primer: For wall/ plastered surfaces - WeatherCoat Exterior Primer / Alternatively, **Weather Shield** diluted using 1 L of water with 1 L of emulsion may be used

Putty: For wall/ plastered surfaces - Luxury Wall Putty

Drying Time



SD: 25-35 min depending on weather conditions

HD: 4 - 6 hours

Application Method



Brush/ Roller/ Spray

Dilution Ratio



Brush: 600 ml of water/1L emulsion

For dark shades only: Maximum dilution should be 10 - 15 % depending on shade. Coverage may be less compared to light shades.

Recommended Thinner



Potable water

Gloss Level



10 - 15 at 60° GH when released

WEATHER SHIELD



Packs



ColorBank/ Non- ColorBank
Pack of 1, 4, 10 and 20 L

Bases
P0, W1, N, N1, N2 and Cream



Fire Hazard Class
Non- flammable



Pot Life of Thinned Material
Overnight

Surface Preparation



For fresh/ new surfaces: Strip all loose particles from the surface with wire brushing and by scraping, followed by a wipe down. Wash the surface down with water and allow it to dry .



Apply one coat of primer and allow it to dry for 6 – 8 hours.

For Previously Painted Surfaces: Strip all the old paint and remove all the loose particles before starting the above process.

Directions for Application

Dilute the paint as per the recommended dilution ratio. Apply the first finishing coat and allow it to dry for at least 6 -8 hours. After the first coat dries, apply the second coat and allow it to dry overnight.

Special Note

Before painting, the following things should be checked thoroughly:

- ▶ Ideal moisture content of the wall should be below 12%
- ▶ Ideal pH value of the wall surface should be between 7-11

Points to Note

- ▶ Shake well before use and do not over dilute
- ▶ Strain the material through a fine sieve before use
- ▶ Keep the container tightly closed to prevent drying
- ▶ Scrape off old paint thoroughly before painting starts
- ▶ Do not apply paint on lime washed surfaces or damp wall
- ▶ Keep out of reach of children and away from foodstuff
- ▶ In case of contact with eyes, wash immediately with water and seek medical help

For Any Query Plz Contact

LUXURY Paints & Chemicals

Office Address : Sector 17, Chandigarh (Near Post Office)

Branch Office : Industrial Area, Ankleshwar (Gujrat)

Working Address : NHI-52, Chandigarh Road, BEHBALPUR Hisar-125001 (Hry.)

Helpline No. : 98121-13582, 98127-53861, E-mail : sharmapaint82@gmail.com

LATEX SILK

ACRYLIC INTERIOR EMULSION

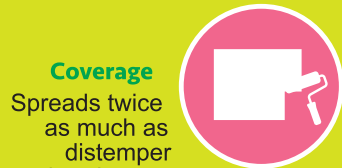


Product Attributes



Value for money

Better finish than distemper at almost the same cost



Coverage

Spreads twice as much as distemper thereby covers twice the wall space

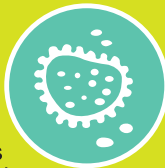


Green Pro Certified

Validates our effort in striving towards cleaner, more sustainable future

Anti-fungal

Resists growth of algae, fungus and moulds



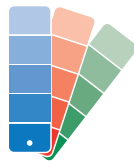
Product Description

SILK Emulsion is an acrylic based matt finish interior emulsion. The product is an ideal choice for price conscious customer. It has twice the durability of a distemper and is suitable for a wide variety of surfaces. It is formulated with special colour fast pigments with excellent anti-fading properties.

Recommended Use

Sand-cement plaster surface, asbestos, brickwork, concrete block and fiberboard

Colour Range



Pigment Add

Finish

HIGH

MEDIUM

SMOOTH ✓

MATT ✓

Smooth and stylish matt finish

Toxicity



VOC < 30 gm/L Dry film is non-toxic, with no added lead and arsenic

Coverage

100-110 sqft/ltr/2 coats

(Coverage may depend on factors like surface conditions, surface preparation, application skill, weather conditions, dilution etc.)

Recommended Undercoats

Primer: For wall/ plastered surfaces → Latex Primer (Alkali Resistant)

Putty: For wall/ plastered surfaces → Luxury Wall Putty

Number of Coats:

2 coats of emulsion for re-painting provided the colour is same.

3 coats of emulsion if fresh painting is required to give a rich matt look.

Application Method



Brush/Roller/Spray

Recommended Thinner / Cleaner



Potable water

Dilution Ratio



For Brush application: 500 ml of water/ L of emulsion

Drying Time



SD: 15 - 25 min depending on weather conditions **HD:** 6 - 8 hours

LATEX SILK

ACRYLIC INTERIOR EMULSION



Packs



1 Ltr

4 Ltr

10 Ltr

20 Ltr



Fire Hazard Class
Non-Jammable



Pot Life of Thinned Material
Overnight

Surface Preparation



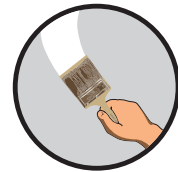
For fresh/ new surfaces, ensure the surface is clean and dry and free from all loose particles, chalk, grease, fungus and algae. Sand the surface with Emery Paper No. 80 and wipe clean.



Apply the first coat of primer and allow it to dry for 6-8 hours.



Smoothen the surface by applying thin coats of putty to fill in all the dents. Allow the putty to dry overnight.



Sand the surface with Emery Paper No. 100 and wipe clean. Apply the second coat of primer and allow it to dry for 6-8 hours. Sand the surface with Emery Paper No. 220 and wipe clean.

For Previously Painted Surfaces: Strip all the old paint and remove all the loose particles before starting the above process of primer and putty application.

Directions for Application

Dilute the paint as per the recommended dilution ratio. Apply the first finishing coat and allow it to dry for at least 6-8 hours. After the first coat dries, apply the second coat and allow it to dry overnight.

Cleaning Instructions

Use only toilet soap to clean stains

Use only a soft white cotton cloth for cleaning

While cleaning, wipe gently without using pressure

Attempt cleaning the surface only after one week of application

Points to Note

- Shake well before use and do not over dilute
- Strain the material through a fine sieve before use
- Keep the container tightly closed to prevent drying
- Use one coat of Bio Wash for killing fungal growth
- Scrape off old paint thoroughly before painting starts
- For deep shade apply one additional coat
- Do not apply paint on lime washed surfaces and damp wall
- In case of contact with eyes, wash immediately with water and seek medical help

For Any Query Plz Contact

LUXURY Paints & Chemicals

Office Address : Sector 17, Chandigarh (Near Post Office)

Branch Office : Industrial Area, Ankleshwar (Gujrat)

Working Address : NHI-52, Chandigarh Road, BEHBALPUR Hisar-125001 (Hry.)

Helpline No. : 98121-13582, 98127-53861, E-mail : sharmapaint82@gmail.com



LATEX RAPIDRY Exterior Primer



Product composition and usage: Luxury Rapidry Exterior Primer is a specially formulated premium quality acrylic primer with superior alkali and efflorescence resistance for application on exterior masonry surfaces. Luxury Rapidry Exterior Primer may be applied on plasters, concrete and other masonry surfaces. The masonry surfaces should be fully cured, dry and free from loose materials.

USP: High whiteness, reduces porosity of wall and reduces efflorescence. It forms highly alkali and water resistant films on surfaces. This prevents water and dissolved salts from penetrating the film and protects the top coat from damage.

Safety features: Non-flammable

DIRECTIONS FOR USE

Surface preparation: Remove paint, dirt, loose particles from the surface to be painted using wire mesh. Fill up minor cracks with crack-seal putty. Cracks which are larger than 5 mm have to be filled with cement work. Let it dry completely. Check moisture content of the substrate. It should be below 12% for superior performance of the primer.

COVERAGE*

All on 1 coat primed surface	No. of coats	New surface
By brush/spray application	2 coat	110 - 120 sq ft

RECOMMENDED SURFACES

Masonry surfaces,
asbestos surfaces,
brick work

*It depends on many factors like surface conditions, surface preparation, application skill, weather conditions, dilution etc. The coverage mentioned is under ideal conditions and will vary depending on site conditions. Coverage on different surfaces takes into account of co-efficient as per IS-1200.

PACKS

Non ColorBank	Colour	Bases (ColorBank)
1 ltr, 4 ltr, 10 ltr 20 ltr	White only	NA

TECHNICAL DATA

1	Recommended Thinner	Potable water
2	Method of Application	Spray, brush after suitable dilution
3	Recommended Dilution	Dilute 1 ltr of primer with upto 1 ltr of water depending on required consistency.
4	Drying Time	SD: 15 minutes HD: 6-8 hours
5	Number of Coats Required	1 (Apply 1 extra coat if required)

6	Gloss/Sheen	Matt, no sheen
7	Flash Point	Non-flammable as it is water-based product
8	Stability of Thinned Paint	Use within 24 hours
9	VOC	30 - 35 gm/ltr
10	Certification	ISO 9001:2015

POINTS TO NOTE

- Shake well before use and do not over dilute
- Strain the material through a fine sieve before use
- Keep the container tightly closed to prevent drying
- Please keep out of reach of children and away from foodstuff
- In case of contact with eyes, wash immediately with water and seek medical advice

SPECIAL NOTE

Before painting the following things should be checked thoroughly:

1. Moisture content of the wall (Ideal condition - below 12%)
2. pH value of the wall surface (Ideal condition - between 7-11)

For Any Query Plz Contact

LUXURY Paints & Chemicals

Office Address : Sector 17, Chandigarh (Near Post Office)

Branch Office : Industrial Area, Ankleshwar (Gujrat)

Working Address : NHI-52, Chandigarh Road, BEHBALPUR Hisar-125001 (Hry.)

Helpline No. : 98121-13582, 98127-53861, E-mail : sharmapaint82@gmail.com



Interior Wall Cement Primer



Product composition and usage: Luxury Interior Primer is manufactured with a special type of acrylic binder and micro fine pigments along with extenders and different additives. It is an air drying primer for masonry providing a hard, tough film.

USP: Good for masonry and asbestos surfaces. It is free from any heavy metals like lead, mercury and chromium.

Safety features: Non-flammable as it is water based.

DIRECTIONS FOR USE

Apply 1 coat of Luxury Interior Primer after diluting properly and straining through a clean cloth. It can be applied by brush or spray. Brushing viscosity should be 50-60 sec at 30°C in Ford Cup B4 and in case of spray application it should be 25-35 sec at 30°C in Ford Cup B4.

Surface preparation and painting procedure: Ensure the surface is rubbed properly with Sand Paper No.60/80/100/120 in phases and ensure all dust is removed. Wipe clean with water and make sure the surface is fully dry.

Consistency: It is a free flowing high viscous liquid.

COVERAGE*

On normal properly cured masonry surface	No. of coats	New surface
By brush application	2 coat	80-100 sq ft

RECOMMENDED SURFACES

Masonry surfaces,
asbestos surfaces,
brick work

*It depends on many factors like surface conditions, surface preparation, application skill, weather conditions, dilution etc. The coverage mentioned is under ideal conditions and will vary depending on site conditions.

PACKS

Non ColorBank	Colour	Bases (ColorBank)
1 ltr, 4 ltr, 10 ltr, 20 ltr	White only	NA



Luxury Acrylic Distemper



Product composition: Luxury Acrylic Distemper is 100% water based acrylic co-polymer emulsion based distemper for interior walls only. It is one of the most trusted brands in India. It is best known for low cost, elegant, smooth, attractive, durable with matt finish. It is eco-friendly and contains no added lead, arsenic etc. besides has low VOC content.

USP: Colour range and value for money.

Usage area: On plastered surfaces.

DIRECTIONS FOR USE

Surface preparation: For fresh/ new surfaces – sand the surface with Emery Paper No.80 and wipe clean. Apply the first coat of primer and allow it to dry for 6 to 8 hours. Smoothen the surface by applying thin coats of putty to fill in all the dents. Allow the putty to dry overnight. Sand the surface with Emery Paper No.100 and wipe clean. Apply the second coat of primer and allow it to dry for 6 to 8 hours. Sand the surface with Emery Paper No.220 and wipe clean.

For previously painted surfaces: Strip all the old paint and remove all the loose particles before starting the above process.

Directions for application: Dilute the paint as per the recommended dilution ratio. Apply the first finishing coat and allow it to dry for at least 6 to 8 hours. After the first coat dries, apply the second coat and allow it to dry overnight.

COVERAGE*

All in 1 coat primed and smooth surface	Brush Application
No. of coats	2 coats
New surface	50 sq ft-55 sq ft

*It depends on many factors like surface conditions, surface preparation, application skill, weather conditions, dilution etc. The coverage mentioned is under ideal conditions and will vary depending on site conditions and takes into account the coefficient as per IS 1200.

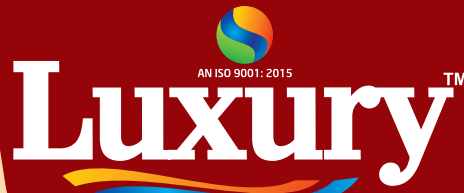
RECOMMENDED UNDERCOATS

Primers
For walls or plastered surfaces – Luxury Primer (Alkali Resistant)
Putty
For walls or plastered surfaces – Luxury Wall Putty

PACKS

Non-colorBank	ColorBank	Offered shade range
5 Kg, 10 Kg, 20 Kg (Professional pack)	5 Kg, 10 Kg, 20 Kg (Professional pack)	To be rationalized as all fandeck shades do not come from yellow and W0 base

CASH TOKEN



यह स्कीम कॉन्ट्रैक्टर व
पेंटर के लिए है।

ADVANCE SIGNATURE

20 Liter



ADVANCE Weather Proof Protect Ultra

20 Liter

Token: (₹)

500 (Compulsory)

Lucky Point: 100

Token: (₹)

400 (Compulsory)

Lucky Point: 75

WEATHER Cool Home Guard

(Super White Exterior Emulsion)

20 Liter



LATEX Cover Max

(Exterior & Interior Primer)

20 Liter

Token: (₹)

300 (Compulsory)

Lucky Point: 60

Token: (₹)

200 (Compulsory)

Lucky Point: 50

WALL PUTTY

20 KG.



WALL PUTTY

20 KG.

Token: (₹)

60 (Compulsory)

Token: (₹)

100 (Compulsory)

CASH TOKEN



यह स्कीम कॉन्ट्रैक्टर व पेंटर के लिए है।

ADVANCE SIGNATURE

20 Liter



Token: (₹) **500 (Compulsory)**



ADVANCE KALASH

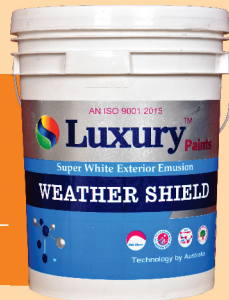
20 Liter

Token: (₹) **200 (Compulsory)**

WEATHER SHIELD

(Super White Exterior Emulsion)

20 Liter



Token: (₹) **100 (Compulsory)**

Lucky Token: *PRODUCT*



LATEX SILK

(Interior Plastic Emulsion)

20 Liter

Token: (₹) **100 (Compulsory)**

Lucky Token: *PRODUCT*

RAPIDRY

(Exterior Primer)

20 Liter



Token: (₹) **100 (Compulsory)**

Lucky Token: *PRODUCT*



INTERIOR WALL CEMENT PRIMER

20 Liter

Token: (₹) **100 (Compulsory)**

Lucky Token: *PRODUCT*

WALL PUTTY

20 KG.



Token: (₹) **60 (Compulsory)**

Lucky Token: *PRODUCT*

*T & C Apply

Luxury Wall Putty

SURFACE PREPARATION



Scrub with wire brush

~~Dirt~~
~~Organic Growth~~
~~Paint~~
~~Salt~~



Clean Prepared surface with water.

COARSE PUTTY MIXING



Mix it till it becomes consistent paste of workable quality. start using the mix after 5-10 minutes.



Water 25 to 28%

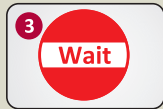
METHOD OF APPLICATION



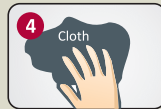
Clean and just-wet the surface before applying Luxury Wall Putty.



Apply first coat from bottom to top direction with a putty blade.



Wait for 8 hours in Hot Season
Wait for overnight in Cold Season



Clean the surface with a dry cloth and then with a wet cloth.



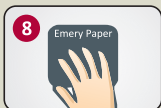
Apply second coat.



Create Textures



Wait for 3 days



Smoothen the surface with fine emery paper before applying paint or fine Luxury Wall Putty if necessary.



When surface is dry, Apply paint

- Luxury Wall Putty is a coarse powder specially formulated to be used as base coat.
- It covers up undulation and can be used as a layer prior to use of Luxury Wall Putty (SFP- silky finish powder) or any painting system.
- It Provides damp and weather resistant finish for further application of all kind of paints (Damp resistance means resistance to water in humid air & not to physical water leakages).
- It gives matt finish.
- The powder to be mixed with water as advised for direct application on plastered surface of interiors/exteriors to get matt finish.
- Can be used directly on concrete rendered wall, hollow blocks, precast walls, concrete ceiling, calcium silicate bricks,
- Not recommended for use on painted or other non-cementitious surfaces.
- Coarse putty is a coarse powder which is often required before application of fine Luxury Wall Putty.
- This is an important product to remove the roughness or undulation of any wall plaster and make it ready to apply fine Luxury Wall Putty.
- For some repairing purpose like filling holes or dent, coarse putty is a much required product before applying fine putty. In fact this is an associative product of Luxury Wall Putty.
- If the plaster is made up of totally coarse sand or has undulation, filling throughout the surface is required with coarse Luxury Wall Putty.

SURFACE PREPARATION

New Surface

New surface requires preparation such as removal of dust, dirt and foreign matter. In case of cracks, voids & damages it should be repaired. Surface should be in just-wet condition, prior to putty application .

Old Unpainted Surface

All loose material, organic growth, dirt, dust, etc. must be removed with steel blade or wire brush. Surface should be in just-wet condition, prior to putty application.

Very Rough Surface (more than 8 mm depth)

If surface plaster was rough, 1st apply white cement / white cement mortar and level the surface. Cure the surface for 2 days, before starting putty coat. Surface should be in just-wet condition, prior to putty application.

*** Just-wet condition could be achieved by applying coat of water with soft brush.**

**** In case of wall exposed to sun, more water spraying shall be done to take away heat from the surface and then bring wall to just-wet condition.**

PREPARATION OF LUXURY WALL PUTTY PASTE

- Mix Luxury Wall Putty slowly @25-28% water by Weight to prepare paste of desired consistency.
- Mix vigorously for 5-10 minutes for making lump free and uniform paste, as shown.
- Product should be mixed in such quantities that it could be used within 45 minutes of its preparation.
- Mixing could be done manually or by suitable electric mixer.



Some Of Our Satisfied Client



Company Vision :-



Quality :-

1. Check Quality by three stage.
2. Before delivery checking all point of product.
3. Work on the complaints take compulsory steps to solve the complain for the customer satisfaction.

Delivery :

1. Deliver the product o the fix time
2. Whatss app facility, Check the delivery status through whatsapp.
3. Free Cost Delivery

Advertisement :-

1. Shop Advertisement Material for Shopkeeper.
2. Painter Meeting & Contractor meeting.
3. Banner, Poster, Books, Magzine, Pens etc. provide for advertisement.
4. Update on Social Media also, Facebook, Youtube, whatsapp etc.

Calling :

1. Everyday contact to painter through calling and tell about the scheme and company product.



LUXURY Paints & Chemicals

Office Address : Sector 17, Chandigarh (Near Post Office)

Branch Office : Industrial Area, Ankleshwar (Gujrat)

Working Address : NHI-52, Chandigarh Road, BEHBALPUR Hisar-125001 (Hry.)

Helpline No. : 98121-13582, 98127-53861

E-mail : sharmapaint82@gmail.com